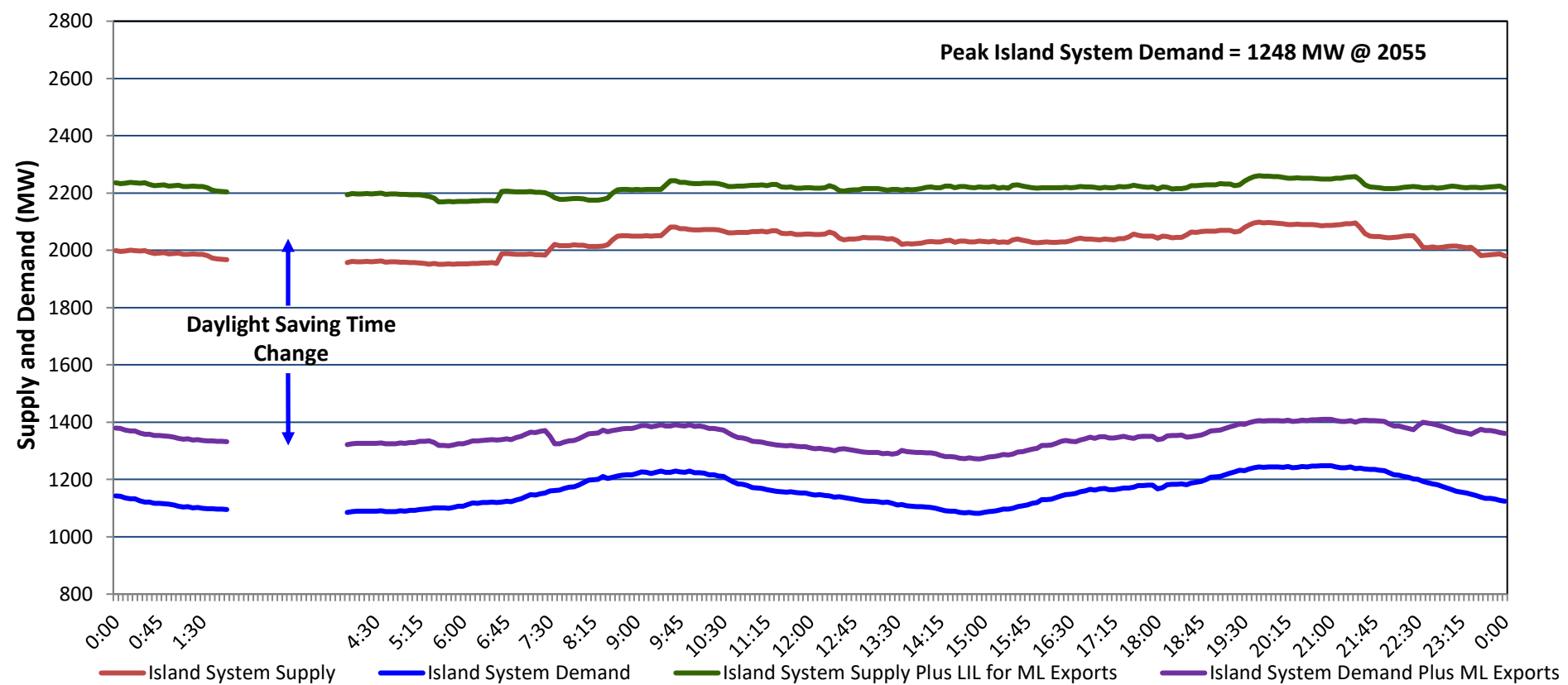


Newfoundland Labrador Hydro (NLH) Supply and Demand Status Report Filed Monday, March 10, 2025

Section 1 Island Interconnected System - Supply, Demand & Exports Actual 24 Hour System Performance For Sunday, March 09, 2025



Island Supply Notes For March 09, 2025

- A** As of 1348 hours, February 19, 2025, Holyrood Unit 1 available at 105 MW due to forced derating (170 MW).
B As of 0855 hours, March 04, 2025, Holyrood Unit 3 available at 130 MW due to forced derating (150 MW).

Section 2 Island Interconnected System - Supply, Demand & Outlook

Mon, Mar 10, 2025	Island System Outlook ²	Seven-Day Forecast	Island System Daily Peak Demand (MW)	
			Forecast ⁸	Adjusted ⁶
Island System Supply: ⁴	2,284 MW	Monday, March 10, 2025	1,415	1,309
NLH Island Generation: ^{3,7}	1,610 MW	Tuesday, March 11, 2025	1,440	1,333
NLH Island Power Purchases: ⁵	135 MW	Wednesday, March 12, 2025	1,415	1,309
NP and CBPP Owned Generation:	215 MW	Thursday, March 13, 2025	1,405	1,299
LIL/ML Net Imports to Island: ⁹	324 MW	Friday, March 14, 2025	1,445	1,338
		Saturday, March 15, 2025	1,260	1,155
7-Day Island Peak Demand Forecast:	1,445 MW	Sunday, March 16, 2025	1,145	1,042

Island Supply Notes For March 10, 2025

- Notes:**
1. Generation outages for running and corrective maintenance are included. These are not unusual for power system operations. They generally do not impact customer supply. Hydro schedules outages to system equipment whenever possible to coincide with periods when customer demands are low and sufficient supply reserves are available. However, from time to time equipment outages are necessary and reserves may be impacted.
 2. As of 0800 Hours.
 3. Gross continuous unit output.
 4. Gross output from all Island sources (including Note 3).
 5. NLH Island Power Purchases include: ML Imports, Exploits Generation, Rattle Brook, Star Lake, Wind Generation and capacity assistance (when applicable).
 6. Adjusted for interruptible load and the impact of voltage reduction when applicable.
 7. Due to limitations inherent in the design of combustion turbines, the output of combustion turbines may be reduced in the event that ambient temperatures exceed the threshold required for full rated output. This threshold is dependent on the design of each turbine.
 8. Does not include ML Exports.
 9. LIL Import sunk in the Island System. Actual LIL flows will be restricted by various system conditions including, but not limited to, Island Load, ML Exports and Avalon Unit status.

Section 3 Island Peak Demand and Exports Information Previous Day Actual Peak and Current Day Forecast Peak

Sun, Mar 09, 2025	Island Peak Demand ¹⁰	20:55	1,248 MW
	Exports at Peak		162 MW
	LIL Net Imports to Island		2,250 MWh
Mon, Mar 10, 2025	Forecast Island Peak Demand		1,415 MW

- Notes:** 10. Island Demand is supplied by NLH generation and purchases, LIL Imports plus generation owned and operated by Newfoundland Power and Corner Brook Pulp & Paper (Deer Lake Power, DLP).